

# Recruitment Management System

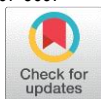
**Bala Logesh M<sup>1</sup>, Aadharsh S.M<sup>2</sup>, Karthik M<sup>3</sup>, Hari Haran K<sup>4</sup>, Radha V<sup>5</sup>**

<sup>1,2,3,4</sup> B.E Students, Department of Computer Science and Engineering, V.S.B College of Engineering Technical Campus, Coimbatore, India.

<sup>5</sup> Assistant Professor, Department of Computer Science and Engineering, V.S.B College of Engineering Technical Campus, Coimbatore, India.

## How to cite this paper:

Bala Logesh M<sup>1</sup>, Aadharsh S.M<sup>2</sup>, Karthik M<sup>3</sup>, Hari Haran K<sup>4</sup>, Radha V<sup>5</sup>. "Recruitment Management System", IJIRE-V4I03-367-369.



<https://www.doi.org/10.59256/ijire.20230403101>

Copyright © 2023 by author(s) and  
5<sup>th</sup> Dimension Research Publication.  
This work is licensed under the Creative  
Commons Attribution International License  
(CC BY 4.0).  
<http://creativecommons.org/licenses/by/4.0/>

**Abstract:** The task is to develop a web-based application for a college's placement administration system. The college's placement office uses a web-based application created on the Windows platform to store student data in a database for companies to utilize during the recruitment process if they have the required login credentials. The system has all the relevant data about the students. In order to send a CV to an employer, the system saves all of the students' personal data as well as their technical skills. Institutions can utilise the system to manage student data and placement information. Students ought to have access to their accounts and be able to upload their assignments. This project helps students to keep track of their personal and academic information. It saves time by decreasing manual labor and reducing the amount of paper used

**Key Word:** Management system, Connectivity, Dynamic Database, Wi-Fi.

## I.INTRODUCTION

Today, emphasis is placed on effective systems and wireless technology. Technology and computers have ingrained themselves into our daily lives, providing access to practically everything we do. Nowadays, there are countless technical advancements that are vital, and it is exceedingly challenging for any organisation to survive without technology. The development of a constantly growing worldwide knowledge database is greatly aided by the World Wide Web. It could potentially be utilised as a method for information sharing within an organisation.

A placement management system aids training and placement officials in overcoming the challenge of maintaining records for thousands of students and finding those who are qualified for employment based on the eligibility requirements of various organisations. It aids in the efficient and effective use of hardware and software resources.

The administrator will either approve or deny the students' requests after they have created their accounts. Students will be permitted to continue based on the administrator's approval. After entering their information, the pupils will have it authorised by the administrator. Once accepted, TPO will notify the students of any modifications. In the future, they can also modify their password and other personal information. This provides instantaneous visible assurance of security and ensures that redundancy will not be permitted and will instead function as planned.

## II.EXISTING SYSTEM

With In the current system, every single process is done by hand. For even the smallest things, the college training and placement officer had to consult all of the previous years' records. This used to take a lot longer than it should and be tedious. Every year that goes by, there are more pupils, making it harder.

The current system has various drawbacks. All tasks in a manual placement management system are carried out by humans. Errors have the greatest likelihood as a result.

The files are not organised in a hierarchy. As a result, looking for something specific becomes difficult. Due to the difficulty and ambiguity of updating some data, there is a risk of information duplication, which can cause data redundancy.

Not every student is aware of the placement updates provided by the college's training and placement officer, so they may miss their chance to secure a seat at a job interview.

## III.PROPOSED SYSTEM

**1. To provide recruitment to students:** The strategic plan of an institution must place a high priority on student recruiting because it is essential to the school's long-term viability and success. To ensure the long-term viability of an institution, it is essential to equip the Training and Placement office with the tools necessary to hire the appropriate number of competent students and students in general.

**2. Planning and organizing various Placement drives in campus:** Students should take advantage of the expo to learn

what employers are searching for in candidates and what competencies are essential for their future roles. Career/Job Fairs are a valuable opportunity to hone networking skills and gain practice in articulating their value to a prospective employer.

**3. Provides Resume building services:** Student can tailor their resume by selecting wording that best fits for each job they apply. Crafting the resume by the students in order to apply for their dream jobs.

### IV.METHODOLOGY



Fig: 1

### V.MODELES

#### A. Student Module

After logging in, students can build and edit their profiles. By entering all the information, they can manage their profile. They fill out their personal and academic details when creating their profile, and they can also upload their résumé. They will receive notifications about upcoming companies, and if a student is qualified for the company, they can submit an application. Additionally, students may examine and download the visited firm aptitude.

#### B. Admin Module

He oversees the university as its president. He is in charge of running this system. He has access to all departments' student information. He is able to upload the student's necessary materials. Through the communication wall, he can communicate with the students, the HoD, and the departmental coordinator. He can provide information on forthcoming businesses as well as events that the T&P cell will perform.

#### C. HoD Module

A HoD oversees each department. The student profiles for each department are available to the HoD. He is able to obtain the student's resume. HoD can interact with other users via the communication wall. The Admin will send the notification to the HoD.

### VI.ARCHITECTURE

#### A. System Architecture

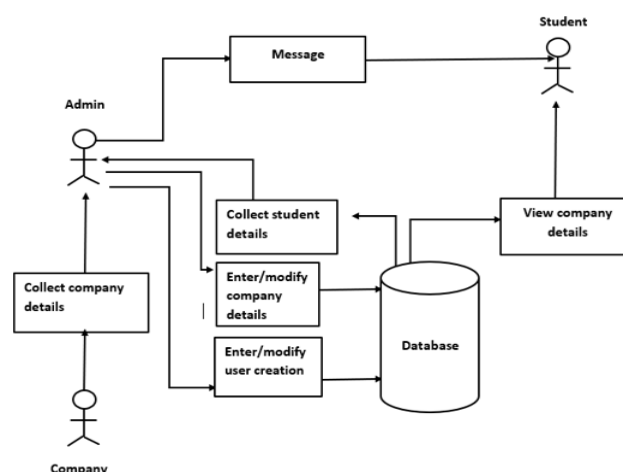


Fig: 2

**B.** The administrator stores the corporate and student data in the database. The ability to add or remove users belongs to the administrator. The administrator may also send notices or messages to the students. The student gets access to both company and drive data.

#### C. Sequence Diagram

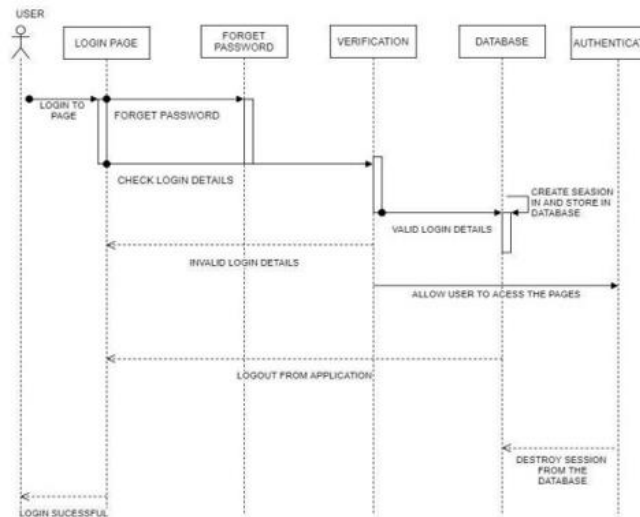


Fig: 3

The user attempts to log into the system using his login credentials; if the credentials are validated from the database and determined to be correct, he logs in successfully; if not, he is unsuccessful. He can log in with the new password by selecting the forgotten password option to reset the password.

## VII.CONCLUSION

College placement managers face numerous challenges when it comes to handling student information. It is more challenging because complete information management is required, allowing for the creation of a web-based solution to address the issue. The input from the system is more precise. Accessible precise data is available. It increases the dependability of systems and software by assuring security. Admin can see which companies' students have applied to and been accepted into, and we hope this initiative will assist many students in the future. As a result, we conclude that the suggested technique will fix the inadequacies in the current system.

## References

1. S. R. Bharamagoudar, R. B. Geeta, and S. G. Totad, "Web based student information management system," *International Journal of Advanced Research in Computer and Communication Engineering*, vol. 2, issue 6, pp. 2342-2348, 2013
2. G. Kumar, "Training Placement Activities in Context with Industry Institute Interaction", *International Journal of Emerging Research in Management & Technology* ISSN: 2278-9359, Volume- 4, Issue11 2015
3. Anjali, Jeyalakshmi.PR, Anubala.R, Sri Mathura devi. G, Ranjini.V, "\"Web Based Placement Management System\"", *International Journal of Computer Science and he Information Technologies*, Vol. 7 (2), 760-763, 2016.
4. K. Anand, Rethesh D, J. Hemalatha, S. Karishma, R. Logeswari "Application for Training and Placement Cell" *International Journal of Pure and Applied Mathematics* Volume 119 No. 15 2018, 2013-2020.
5. Suraj Trimukhe, Anil Todmal, Kanchan Pote, Monali Gite, Asst. Prof. S.S. Pophale "Online Training and Placement System (IRJET)" *Department of Information Technology, D.V.V.P.C.O.E.A., Ahmednagar, Maharashtra, India, International Journal of Advanced Research in Computer Science and Software Engineering*, Volume 7, Issue 4, April 2017.
6. Cmak Zeelan Basha, Sofia Tasneem, Preethi Miriyala "Enhanced Technique for Placement Monitoring using ServiceNow Portal" *International Journal of Innovative Technology and Exploring Engineering (IJITEE)* ISSN: 2278-3075, Volume-9 Issue-1, November 2019